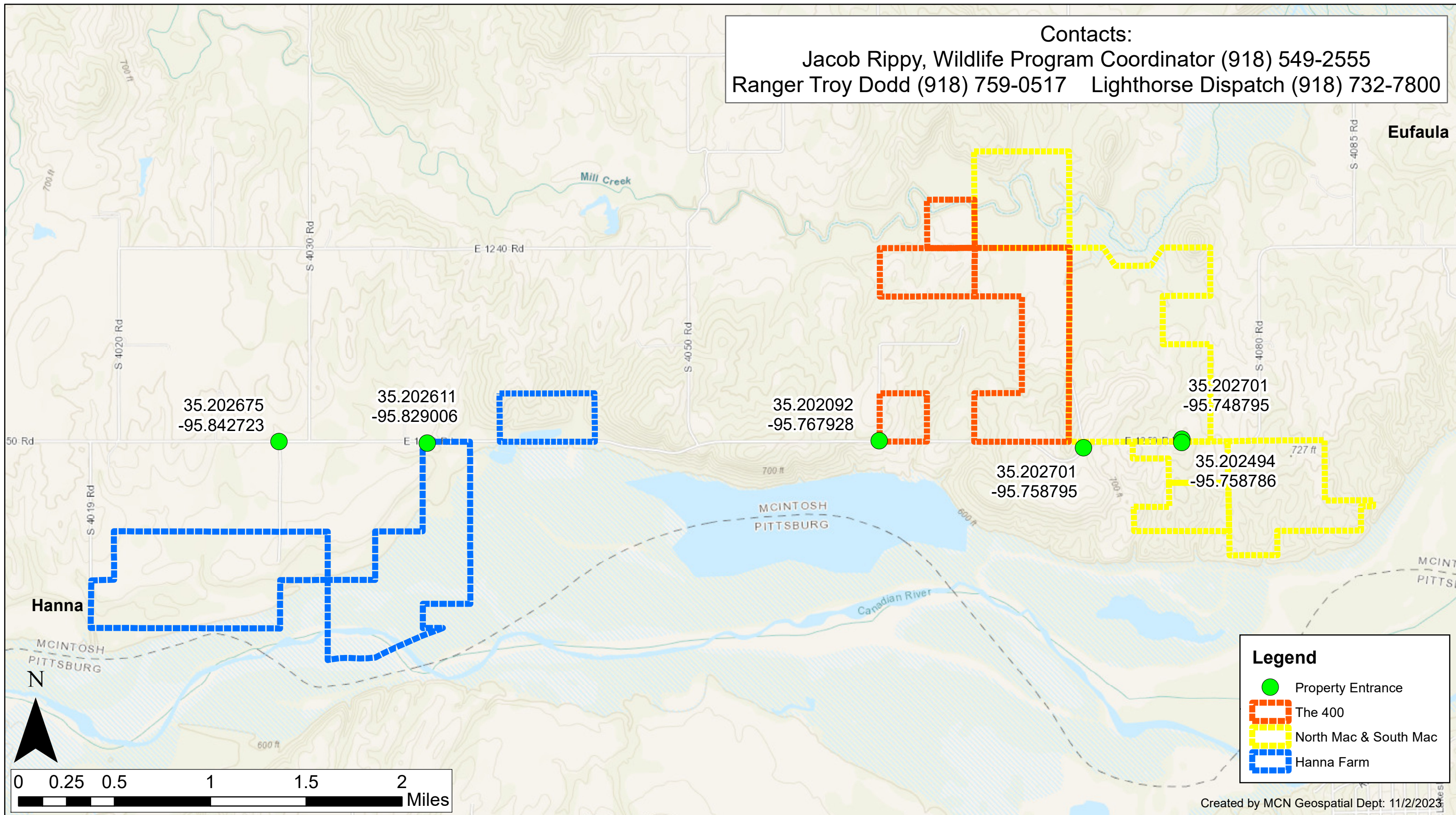


Contacts:
Jacob Rippy, Wildlife Program Coordinator (918) 549-2555
Ranger Troy Dodd (918) 759-0517 Lighthouse Dispatch (918) 732-7800



Division of Agriculture and Natural Resources

Directions from Eufaula, Oklahoma to Hanna Farm, The 400, North Mac and South Mac

Disclaimer: The information presented on this map is for general identification and not legal or regulatory purposes. Boundary and fence lines are approximate and not guaranteed to be accurate. Each user of the map is responsible for determining its suitability for his or her intended use or purpose. Neither the Muscogee (Creek) Nation nor any of its departments, programs or employees shall have any legal liability or responsibility for the data or lack thereof, or any decision made or action not taken in reliance upon any of the data contained on the map.

*** WALK IN ONLY PROPERTIES***
*** DO NOT BLOCK GATES***